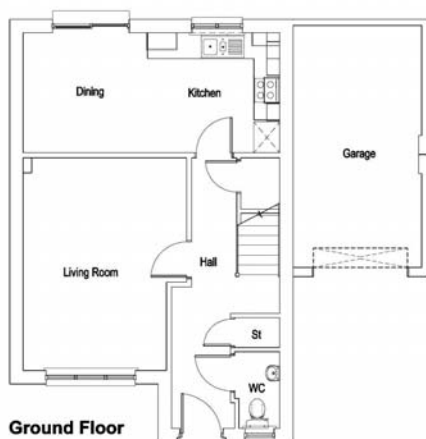


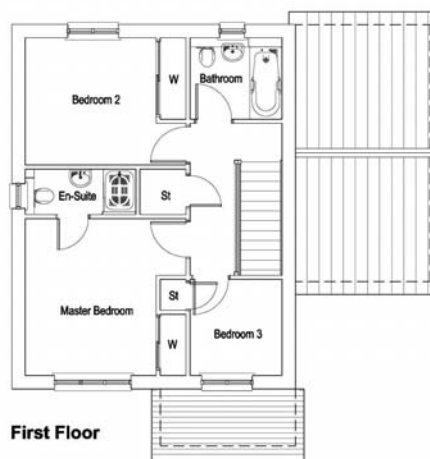
The Balmoor

3 bed villa with garage

Available as a semi-detached or detached villa The Balmoor is a well designed contemporary home comprising spacious lounge, kitchen with open plan dining area from which double French doors lead directly to the rear garden. Master bedroom with ensuite, main bathroom and two further bedrooms.



Ground Floor



First Floor

The Balmoor - Room sizes are approximate

	Width Metres		Depth Metres
Lounge	3.79m	x	4.97m
Dining Area	2.89m	x	2.8m
Kitchen	3.07m	x	2.8m
WC	1.05m	x	1.79m
Master Bedroom Room	3.04m	x	3.67m
En-Suite	2.57m	x	1.06
Bedroom 2	3.04m	x	2.97m
Bedroom 3	2.13m	x	2.25m
Bathroom	2.13m	x	1.9m

Plots 1, 3, 6, 11, 12, 17, 18, & 21
Total Floor Area 97.7 sqm

A development by

DEVERONhomes