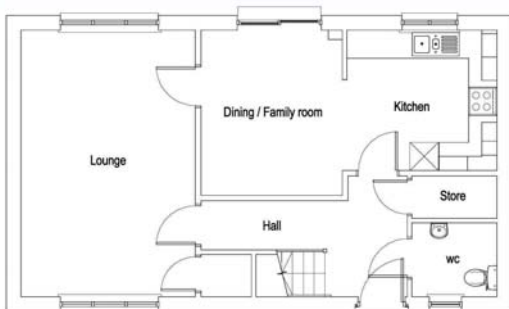


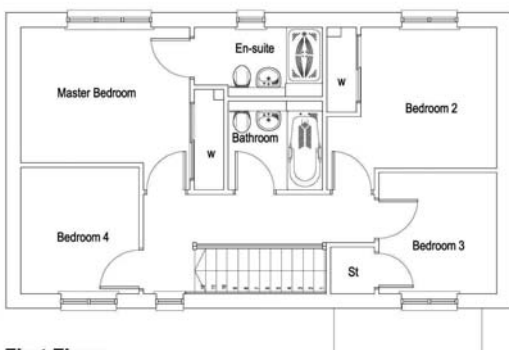
# The Dunbury

## 4 bed villa with detached garage

Stylish contemporary home with entrance hall leading to extra large lounge. Open plan kitchen and dining area with double French doors leading to the rear patio. King-sized master bedroom with ensuite, family bathroom and three further bedrooms.



Ground Floor



First Floor

The Dunbury- Room sizes are approximate

	Width Metres		Depth Metres
Lounge	3.07m	x	5.07m
Dining	3.0m	x	3.53m
Kitchen	3.18m	x	3.0m
WC	1.08m	x	1.58m
Master Bedroom	3.58m	x	2.09m
En-Suite	2.72m	x	1.48m
Bedroom 2	2.88m	x	3.01m
Bedroom 3	2.05m	x	2.59m
Bedroom 4	2.05m	x	2.70m
Bathroom	2.00m	x	1.09m

Plots 8

Total Floor Area 115.14 sqm

A development by

**DEVERON**homes