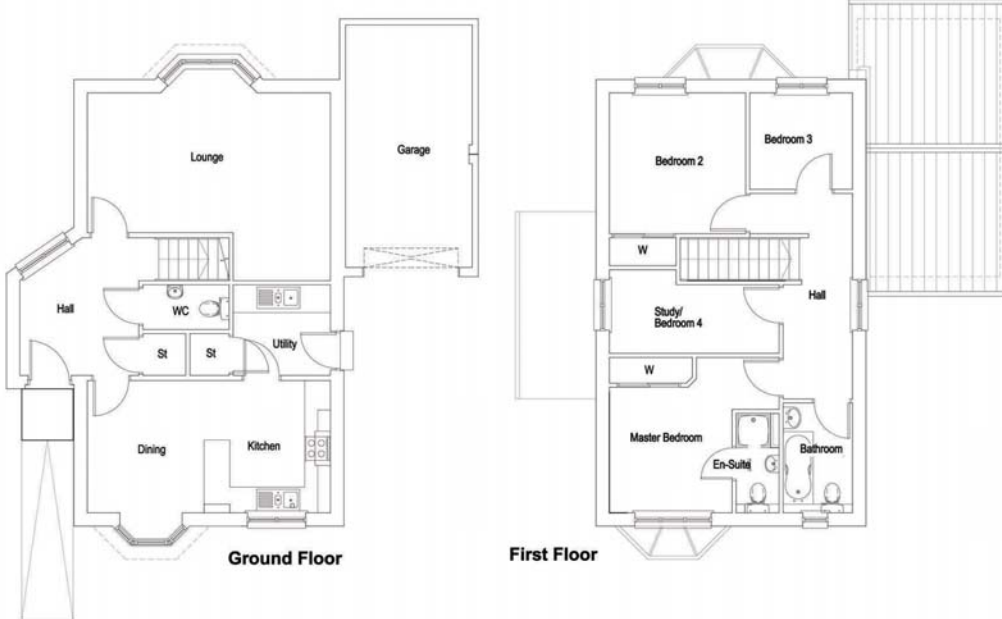


# The Forvie

## 4 bed detached villa with garage.

Designed for spacious family living The Forvie boasts large lounge, open plan kitchen and dining area and lower cloakroom. Feature staircase leads to generous master bedroom with ensuite, three further bedrooms and good - sized family bathroom.



The Forvie - Room sizes are approximate

	Width Metres		Depth Metres
Lounge	4.38m	x	5.66m
Dining Area	3.08m	x	2.72m
Kitchen	3.08m	x	2.94m
WC	1.04m	x	2.01m
Utility Room	2.11m	x	2.26m
Bedroom 1	3.0m	x	2.8m
Master Bedroom	2.93m	x	2.86m
En-Suite	2.32m	x	1.0m
Bedroom 2	3.28m	x	3.17m
Bedroom 3	2.25m	x	2.39m
Bedroom 4	1.95m	x	3.95m
Bathroom	2.56m	x	1.61

Plots 4, 5, & 19  
Total Floor Area 116.35 sqm