

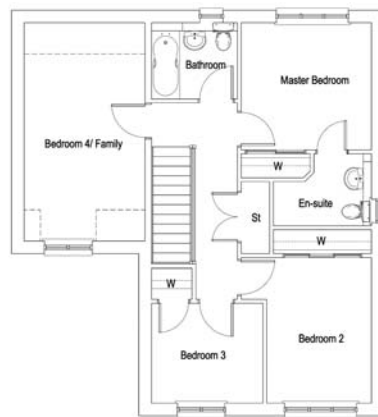
# The Slains

## 4 bed detached villa with integral garage

Beautiful 4 bed villa with open plan kitchen and dining area. Large, sunny lounge with double French doors leading to patio and rear garden. Fabulous master suite, spacious main bathroom, bedrooms two and three and a very generous fourth bedroom, ideal for that home cinema or second family room.



Ground Floor



First Floor

The Slains - Room sizes are approximate

	Width Metres		Depth Metres
Lounge	3.75m	x	5.7m
Dining	3.0m	x	3.53m
Kitchen	3.18m	x	3.0m
WC	1.8m	x	1.58m
Master Bedroom	3.58m	x	2.9m
En-Suite	2.7m	x	1.48m
Bedroom 2	2.88m	x	3.01m
Bedroom 3	2.5m	x	2.59m
Bedroom 4	2.5m	x	2.70m
Bathroom	2.1m	x	1.9m

Plots 13, 14, & 23  
Total Floor Area 120.09 sqm